

# SHOP SYSTEM TRACK

---

## SHOP LIGHTING



### PARAMETRY TECHNICZNE

---

Power supply:	220-240V/ 50-60 Hz
Body:	aluminium
Number of phases:	3
Protection class:	I

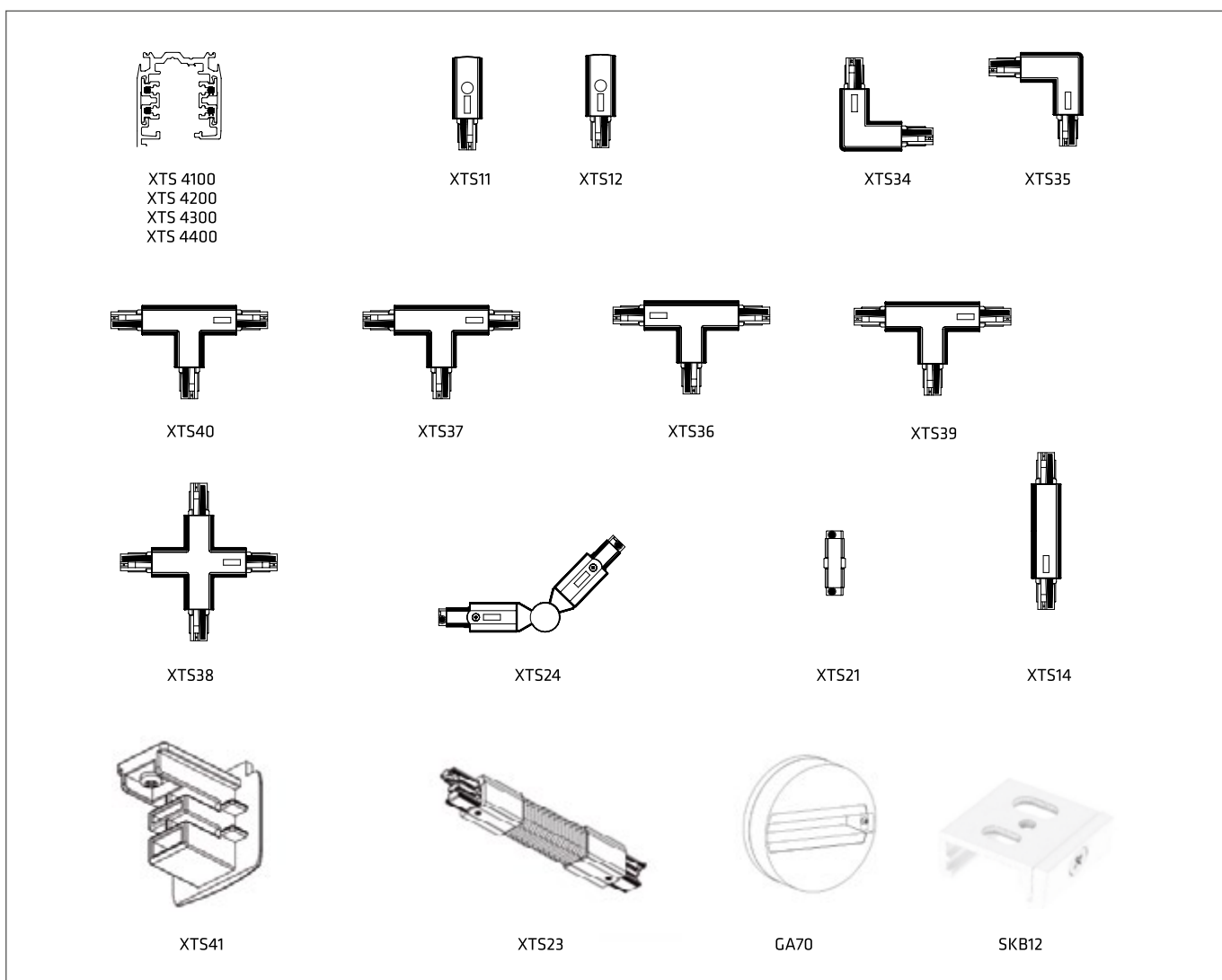
3-phase square lighting track intended for the powering lighting fixtures equipped with adapters. Possibility of surface-mounting or suspension.

A wide range of connectors and accessories allows you to create lighting configurations of any shape.

Along with the Shop System projectors they are dedicated for use in boutique stores, supermarkets, shopping centers, and for highlight exhibitions in museums and galleries.

# SHOP SYSTEM TRACK

## SHOP LIGHTING



*After all the tracks are connected the XTS41 end cap should be installed.  
The track system must be supplied with a conductor with a minimum radius of 1.5 mm*



**ADJUSTABLE CABLE BRACKET**  
3M, 5M or 7M CEILING  
MOUNTING GRIP



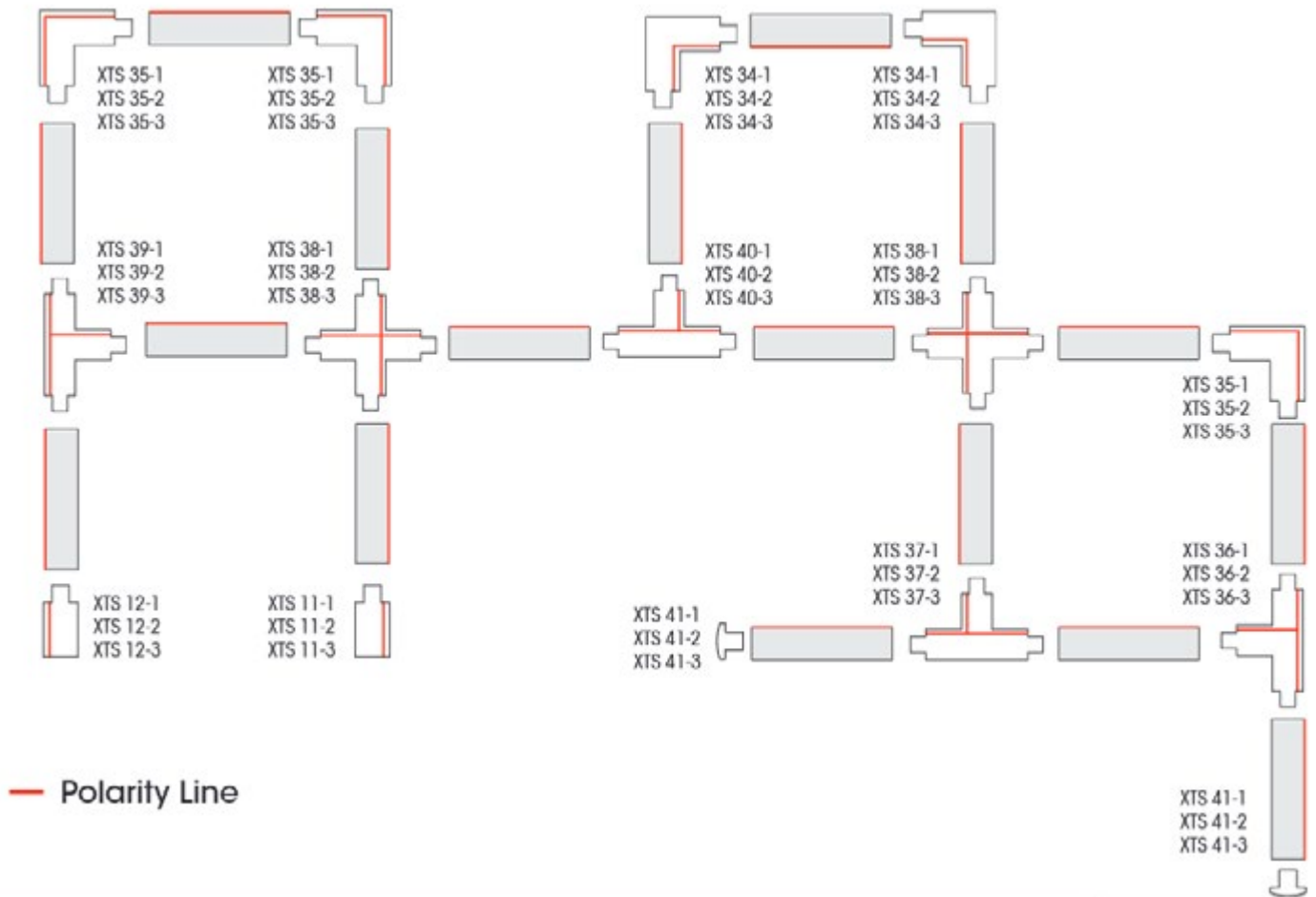
**CEILING BASE**  
TRANSPARENT CABLE  
ADJUSTABLE CABLE 3M, 5M or 7M  
MOUNTING GRIP

# SHOP SYSTEM TRACK

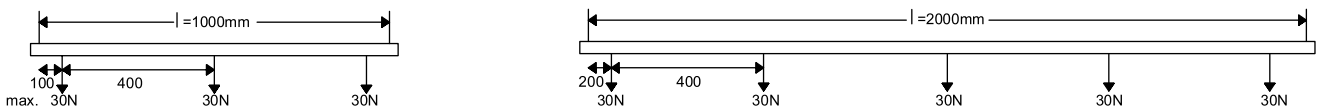
## SHOP LIGHTING

index	Article name
456336	SHOP SYSTEM T LED 1000 track 3F BLACK (XTS 4100-2)
456640	SHOP SYSTEM T LED 1000 track 3F WHITE (XTS 4100-3)
456145	SHOP SYSTEM T LED 2000 track 3F BLACK (XTS 4200-2)
456657	SHOP SYSTEM T LED 2000 track 3F WHITE (XTS 4200-3)
968747	SHOP SYSTEM T LED 3000 track 3F BLACK (XTS 4300-2)
968754	SHOP SYSTEM T LED 3000 track 3F WHITE (XTS 4300-3)
968761	SHOP SYSTEM T LED 4000 track 3F BLACK (XTS 4400-2)
968778	SHOP SYSTEM T LED 4000 track 3F WHITE (XTS 4400-3)
456862	SHOP SYSTEM T LED End power supply LEFT BLACK (XTS11-2)
456671	SHOP SYSTEM T LED End power supply LEFT WHITE (XTS11-3)
456855	SHOP SYSTEM T LED End power supply RIGHT BLACK (XTS12-2)
456664	SHOP SYSTEM T LED End power supply RIGHT WHITE (XTS12-3)
456879	SHOP SYSTEM T LED Through power supply BLACK (XTS14-2)
456688	SHOP SYSTEM T LED Through power supply WHITE (XTS14-3)
456893	SHOP SYSTEM T LED Inside line connector BLACK (XTS21-2)
456701	SHOP SYSTEM T LED Inside line connector WHITE (XTS21-3)
968785	SHOP SYSTEM T LED Flexible connector BLACK (XTS23-2)
968792	SHOP SYSTEM T LED Flexible connector WHITE (XTS23-3)
456886	SHOP SYSTEM T LED Movable line connector BLACK (XTS24-2)
456695	SHOP SYSTEM T LED Movable line connector WHITE (XTS24-3)
456916	SHOP SYSTEM T LED Connector "L" LEFT BLACK (XTS34-2)
456725	SHOP SYSTEM T LED Connector "L" LEFT WHITE (XTS34-3)
456909	SHOP SYSTEM T LED Connector "L" RIGHT BLACK (XTS35-2)
456718	SHOP SYSTEM T LED Connector "L" RIGHT WHITE (XTS35-3)
456930	SHOP SYSTEM T LED Connector "T" LEFT BLACK (XTS36-2)
456749	SHOP SYSTEM T LED Connector "T" LEFT WHITE (XTS36-3)
968808	SHOP SYSTEM T LED Connector "T" Internal RIGHT BLACK (XTS37-2)
968815	SHOP SYSTEM T LED Connector "T" Internal RIGHT WHITE (XTS37-3)
456947	SHOP SYSTEM T LED Connector "X" BLACK (XTS38-2)
456756	SHOP SYSTEM T LED Connector "X" WHITE (XTS38-3)
456923	SHOP SYSTEM T LED Connector "T" RIGHT BLACK (XTS39-2)
456732	SHOP SYSTEM T LED Connector "T" RIGHT WHITE (XTS39-3)
968822	SHOP SYSTEM T LED Connector "T" Internal LEFT BLACK (XTS40-2)
968839	SHOP SYSTEM T LED Connector "T" Internal LEFT WHITE (XTS40-3)
457029	SHOP SYSTEM T LED End cap BLACK (XTS41-2)
456831	SHOP SYSTEM T LED End cap WHITE (XTS41-3)
255106	EXPO SYSTEM LED Ceiling base BLACK (GA70-2)
255113	EXPO SYSTEM LED Ceiling base WHITE (GA70-3)
968846	SHOP SYSTEM T LED ADJUSTABLE CABLE + 3M CEILING BRACKET
968853	SHOP SYSTEM T LED ADJUSTABLE CABLE + 5M CEILING BRACKET
968860	SHOP SYSTEM T LED ADJUSTABLE CABLE + 7M CEILING BRACKET
968877	SHOP SYSTEM T LED SET : WHITE CEILING BASE, TRANSPARENT CABLE, ADJUSTABLE CABLE 3M
968884	SHOP SYSTEM T LED SET : WHITE CEILING BASE, TRANSPARENT CABLE, ADJUSTABLE CABLE 5M
968891	SHOP SYSTEM T LED SET : WHITE CEILING BASE, TRANSPARENT CABLE, ADJUSTABLE CABLE 7M
968907	SHOP SYSTEM T LED SET : BLACK CEILING BASE, TRANSPARENT CABLE, ADJUSTABLE CABLE 3M
968914	SHOP SYSTEM T LED SET : BLACK CEILING BASE, TRANSPARENT CABLE, ADJUSTABLE CABLE 5M
968921	SHOP SYSTEM T LED SET : BLACK CEILING BASE, TRANSPARENT CABLE, ADJUSTABLE CABLE 7M
968723	SHOP SYSTEM T LED - black mounting grip (SKB 12-2)
968730	SHOP SYSTEM T LED - white mounting grip (SKB 12-3)

Przykładowy schemat sieci oświetlenia



Spacing of mounting elements, the permissible load:



Recommended spacing of mounting elements  $l \sim 1000$  mm. The lighting tracks are equipped with mounting holes.

Required Number of lines to mount the rail = rail length + 1 (e.g. for 1m -2 pieces, for 2m-3 pieces etc.)

The company reserves the right to make design changes or upgrades in the presented product.  
Product data sheet does not constitute an offer.

18.3.2021



Lena Lighting S.A.  
ul. Kórnicka 52  
63-000 Środa Wielkopolska

tel. +48 (61) 28 60 300  
fax. +48 (61) 28 54 059  
e-mail: office@lenalighting.pl  
www.lenalighting.pl



The luminaire complies with the EU  
ROHS Directive 2011/65/UE.



This product is a subject to electric and  
electronic waste equipment regulations  
(WEEE).



Nr. 37/2015