



FUTURE LED family

Modern construction site lighting



A complete lighting kit for all companies
from the construction sector

FUTURE LED family



Scan a code
and watch



The products falling into the FUTURE product family allow to use them inside and outside buildings, and the entirety of offer is selected so as to solve all problems related to temporary lighting for construction works, at every stage of their performance.

Lena Lighting, the manufacturer and distributor of FUTURE products, focuses on the high quality and durability of these products, which translates into the fact that they are used by construction companies throughout Europe. We listen to clients' needs and implement their ideas.

Key benefits

„We do not want to advertise and sell our lamps, while giving empty promises” - this is the rule of the Lena Lighting sales department, selling its products throughout Europe.

We present below a short summary of benefits and features for the user, which makes them reflected in facts. We introduce the most important one:



LIGHTING ADAPTED TO CONSTRUCTION NEEDS

- Specially designed large angle of light distribution (120°), which enables good lighting for workplaces from short distances,
- Light color (4000 K), which is similar to the daylight color. The color has been specially selected for the requirements related to renovation and construction works, which allows better lighting of the room and detecting possible shortcomings in the works,
- Specialized lens structure used in our fittings allows to protect employees' vision from glare spillage and at the same time minimizes light losses (up to 95% permeability), which is blocked by the smoky lens!



DURABILITY AND LONG LIFETIME UNDER CONSTRUCTION CONDITIONS

- Impact resistance of products determined by the IK degree - our lamps always feature the highest values,
- 5-year warranty on the availability of spare parts - as the manufacturer, we enable the purchase of each lamp part,
- High tightness of products (IP54) protects the lamps against the ingress of water and dust, allowing the use even in heavy rainfall or sanding conditions,
- High resistance to low and high ambient temperatures - thanks to the selection of appropriate components, the products can work in ambient temperatures from -10°C to +40°C.



ENERGY EFFICIENCY AND LABOR COSTS

- Use of high-quality LEDs allows for low energy consumption, as evidenced by the ratio of light emission to energy consumption - always above 120 lumens per watt,
- Purchasing good-quality products can minimize downtime caused by machine or tool failures,
- Using our lamps with the extender function eliminates the need to buy a separate extender.



FAST ASSEMBLY, DISASSEMBLY AND TRANSPORTATION OF LAMPS

- Thanks to the use of our products, lamp holders, cable reels or additional accessories (switch, backlight), which were especially consulted at the design stage, make works easier and faster,
- Universal stand, which is dedicated to the entire Lena Lighting fittings, allows to place all our lamps on it. It also allows you to combine different lamps in any configuration,
- Always applied, a long, 5-meter power cable makes each of our lamps always ready to work.



EXTENSION CORD FUNCTION

- Our lamps are available in options with sockets in the housing - this allows you to buy two devices at the single price: lamp and extension,
- High parameters of the cable - our cables are selected to allow other power tools to be connected to the lamps.



HIGH LEVEL OF SECURITY AND CONSTRUCTION SITE SAFETY

- Plastic construction of the housing and lens makes it always cool, and it will never pose a risk of ignition or hazard for employees,
- Our products meet all, even the most stringent certification requirements, as evidenced by the fact that they are used on such demanding and restrictive markets as these in Scandinavia and Germany.

MAGNUM FUTURE LED XL

High output floodlights

50W 78W max. 9500lm



- + Light source: highly efficiency LED GO!
- + Total luminous flux: 5500lm / 9500lm
- + Power: 50W / 78W
- + Ingress protection class: IP54
- + Impact protection class: IK10
- + Impact resistance body
- + Multi-positional arm with a position angle lock
- + Anti-glare diffuser made of frozen polycarbonate
- + Cable winding holders
- + Ergonomic handle
- + Rubber cable H07RN-F 3x1,5mm² (5m)
- + Weight: 3,3kg-3,7kg
- + Universal mounting bracket included



MAGNUM FUTURE LED XL are directional floodlights that allow illuminating very large operation area indoors and outdoors. Fittings may also function as an extension (optionally they can be equipped with two sockets in the housing). The anti-glare lens, despite the matt surface, transmits up to 93% of light emitted by the diodes. Optionally, the fitting can be equipped with a backlight feature, i.e. a back lamp that allows illuminating the floodlight's surroundings after construction works. Each package contains a universal mounting holder (plastic cable tie).



Scan a code and watch. Learn more



www.lenalighting.pl/magnum



50W VERSION

| | |
|--|--------|
| MAGNUM FUTURE LED XL 50W UNI-SCHUKO PLUG / 2xSCHUKO / 220-240V / IP54 | 247347 |
|--|--------|

| | |
|---|--------|
| MAGNUM FUTURE LED XL 50W UNI-SCHUKO PLUG / 2xPL-FR / 220-240V / IP54 | 247903 |
|---|--------|

| | |
|--|--------|
| MAGNUM FUTURE LED XL 50W DK PLUG / 2xDK / 220-240V / IP44 | 247330 |
|--|--------|

78W VERSION

| | |
|--|--------|
| MAGNUM FUTURE LED XL MAX 78W UNI-SCHUKO PLUG / 2xSCHUKO / 220-240V / IP54 | 248887 |
|--|--------|

| | |
|---|--------|
| MAGNUM FUTURE LED XL MAX 78W UNI-SCHUKO PLUG / 2xPL-FR / 220-240V / IP54 | 248894 |
|---|--------|

| | |
|--|--------|
| MAGNUM FUTURE LED XL MAX 78W DK PLUG / 2xDK / 220-240V / IP44 | 248917 |
|--|--------|

Versions available on request:

- Without sockets
- With switch
- With switch and backlight
- Low voltage 24V and 42V (for 42W power).



MAGNUM FUTURE LED

Compact floodlight

32W **ACCU** **max. 3300lm**



- + Light source: highly efficiency LED GO!
- + Total luminous flux: 3300lm
- + Power: 32W
- + Ingress protection class: IP54
- + Impact protection class: IK10
- + Impact resistance body
- + Multi-positional arm with a position angle lock
- + Anti-glare diffuser made of frozen polycarbonate
- + Cable winding holders
- + Ergonomic handle
- + Rubber cable H07RN-F 3x1,5mm² (5m)
- + Weight: 2,6 kg - 3,0 kg
- + Universal mounting bracket included

Version with battery:

- + Battery operation modes:
 - + 20W, 2000 lm, work time: 2h
 - + 10W, 1000 lm, work time: 4h
 - + 7W, 650 lm, work time: 6h
- + Battery Li-ION 2000 mAh 18,5V (charge time: 4h)
- + Detachable cable (2.5 m) with external charger



MAGNUM FUTURE LED are directional floodlights for illuminating the workplace inside and outside the buildings. These floodlights offer exactly the same features available in Magnum Future LED XL: extender function, anti-glaze lens, backlight lamp, universal mounting holder (detailed descriptions of these functions on page 6) and additional battery function. This function allows you to use the floodlight without a cable, which can be detached from the fitting. The power and length of illumination with the battery function can be freely adjusted with three available modes. Note! The battery version does not include the option with sockets in the housing and the backlight function. Each package contains a universal mounting holder (plastic cable tie).



Scan a code and watch. Learn more!



www.lenalighting.pl/magnum



32W VERSION

| | |
|---|--------|
| MAGNUM FUTURE LED 32W UNI-SCHUKO PLUG / 2xSCHUKO / 220-240V / IP54 | 247019 |
| MAGNUM FUTURE LED 32W UNI-SCHUKO PLUG / 2xPL-FR / 220-240V / IP54 | 247309 |
| MAGNUM FUTURE LED 32W DK PLUG / 2xDK / 220-240V / IP44 | 247026 |

32W ACCU VERSION

| | |
|---|--------|
| MAGNUM FUTURE LED 32W ACCU UNI-SCHUKO PLUG / 220-240V / IP54 | 247125 |
|---|--------|

Versions available on request:

- Without sockets
- With switch
- With switch and backlight
- Low voltage 24V, 42V, 110V



MAGNUM FUTURE LED XS

Manual floodlight

20W **ACCU** **max. 2300lm**



- + Light source: highly efficiency LED GO!
- + Total luminous flux: 2300lm
- + Power: 20W
- + Ingress protection class: IP54
- + Impact protection class: IK10
- + Light angle distribution: 120° lub 45°
- + Impact resistance body
- + Multi-positional arm - hook for mounting
- + Anti-glare diffuser made of frozen polycarbonate
- + Innovative and diverse assembly options
- + Rubber cable H07RN-F 2x1,0mm² (3m)
- + Weight: 1 kg
- + Zip-strap (universal holder) in set

Version with battery:

- + Battery operation modes:
 - + 20W, 2000 lm, work time: 2h
 - + 10W, 1000 lm, work time: 4h
 - + 7W, 650 lm, work time: 6h
- + Detachable cable (2.5 m) with external charger
- + Battery Li-iON 2000 mAh 18,5V (charge time: 4h)
- + Battery indicator diode



MAGNUM FUTURE LED XS are compact and lightweight floodlights for illuminating the workplace inside and outside the buildings. Fittings may also function as an extension (optionally they can be equipped with one socket in the housing). The anti-glare lens, despite the matt surface, transmits up to 93% of light emitted by the diodes. Magnum Future LED XS also comes in a battery version, which allows you to use the floodlight without a cable, which can be detached from the fitting. The power and length of illumination with the battery function can be freely adjusted with three available modes. Note! The battery version does not include the option with the socket in the housing. Each package contains a universal mounting holder (plastic cable tie).



Scan a code and watch. Learn more!



www.lenalighting.pl/magnum



20W VERSION

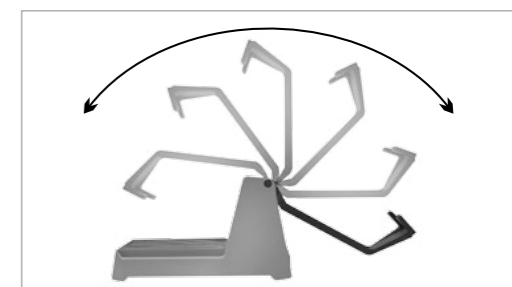
| | |
|--|--------|
| MAGNUM FUTURE LED XS 20W UNI-SCHUKO PLUG / 1xSCHUKO / 220-240V / IP54 | 248689 |
| MAGNUM FUTURE LED XS 20W UNI-SCHUKO PLUG / 1xPL-FR / 220-240V / IP54 | 248535 |
| MAGNUM FUTURE LED XS 20W DK PLUG / 1xDK / 220-240V / IP44 | 248764 |

20W ACCU VERSION

| | |
|---|--------|
| MAGNUM FUTURE LED XS 20W ACCU UNI-SCHUKO PLUG / 220-240V / SWITCH / IP54 | 248818 |
|---|--------|

Versions available on request:

- Without sockets
- Low voltage 24V and 42V
- Beam angle 120°



FUTURE LINE LED

Construction lighting chain

4x8W 3x8W max. 2720lm



- + Light source: highly efficiency LED GO!
- + Total luminous flux: 4x680lm / 3x680lm
- + Power: 4x8W / 3x8W
- + Ingress protection class: IP44
- + Impact resistance body
- + Anti-glare diffuser made of frozen polycarbonate
- + Innovative mounting options for the luminaire
- + The possibility of constructing light chains
- + Rubber cable H07RN-F 2x1mm²
 - 3 m initial with a plug
 - 2.5 m between lamps
 - 1m end with socket
- + Weight: 0,3kg
- + Universal mounting bracket included
- + The possibility of creating max. 120m of light line (10x Future Line LED 4x8W lamp).



FUTURE LINE LED is a rope light for quick and temporary lighting of the workplace. Available in versions with 3 and 4 fittings on one rope, it allows to connect them to a maximum of 10 chains at the same time. The special shape of fitting enables the assembly in the construction conditions (with nails, screws, pipes, scaffolding, etc.) and further free positioning of the lighting direction. The ropes are equipped with hooks for fixing the cable, universal mounting holders and magnets screwed into various places of fittings. The length of one lighting chain is 11.5 m (for the version with 4 fittings) or 9 m (for the version with 3 fittings).



Scan a code and watch. Learn more!



www.lenalighting.pl/futureline



4x8W VERSION

| | |
|---|--------|
| FUTURE LINE LED 4x8W 2-PIN PLUG / 2-PIN / 220-240V / IP 44 | 248542 |
|---|--------|

| | |
|--|--------|
| FUTURE LINE LED 4x8W 2-PIN PLUG / 2-PIN / 220-240V / IP 44 / MAGNET | 248559 |
|--|--------|

3x8W VERSION

| | |
|---|--------|
| FUTURE LINE LED 3x8W 2-PIN PLUG / 2-PIN / 220-240V / IP 44 | 248573 |
|---|--------|

| | |
|--|--------|
| FUTURE LINE LED 3x8W 2-PIN PLUG / 2-PIN / 220-240V / IP 44 / MAGNET | 248566 |
|--|--------|

Versions available on request:

- 48V low voltage version



SITE LIGHT FUTURE LED

Painting lamps 360°

28W **ACCU** **max. 3500lm**



28W VERSION

| | |
|--|--------|
| SITE LIGHT FUTURE 28W UNI-SCHUKO PLUG / SCHUKO SOCKET / 220-240V | 621314 |
| SITE LIGHT FUTURE 28W UNI-SCHUKO PLUG / PL-FR SOCKET / 220-240V / IP54 / 3M CABLE | 621017 |
| SITE LIGHT FUTURE 28W DK PLUG / DK SOCKET / 220-240V / IP54 / 3M CABLE | 621079 |

Versions available on request:

- Without sockets
- Low voltage 24V and 48V
- ACCU version



- + Light source: highly efficiency LED GO!
- + Total luminous flux: 3500lm
- + Power: 28W
- + Ingress protection class: IP44/54
- + Impact protection class: IK10
- + Impact resistance body
- + Anti-glare diffuser made of frozen polycarbonate
- + Foldable hook
- + Rubber cable H07RN-F 3x1,5mm² (3m, 5m)
- + Weight: 1,5kg
- + Cable reel in the housing of the luminaire
- + Smaller size, compact construction
- + Stacking possible on one pallet. Convenient transport of large quantities of fittings from and to construction sites

Version with battery:

- + Emergency working time – 3x1 hour of working without power supply
- + Total luminous flux: 3500lm
- + Immediate and automatic switching to „emergency” mode after power failure
- + Li-Ion 2,2Ah 14,8V battery
- + Quick battery charging (4h)



SITE LIGHT FUTURE is the only fitting with the possibility of lighting in every direction. It ensures even and solid lighting in the entire room. The fitting can also function as an extension (optionally it can be equipped with a socket in the housing). The anti-glare lens, despite the matt surface, transmits up to 93% of light emitted by the diodes. High luminous efficiency of 3500 lm makes work more convenient. Each fitting is provided with a specially projected hook for suspension and a cable reel. Optionally, the fitting can also be equipped with a magnet in the base, a switch or emergency lighting function in the event of a power failure. Smaller size and compact construction makes it more convenient for transport. The latter function also allows you to switch the fitting between the manual function and the battery function. Note! The battery version is equipped with a specialized electronic system that always maintains the maximum battery level, which means that the fitting is always ready for operation in the battery version.



Scan a code and watch. Learn more!



www.lenalighting.pl



FUTURE BALL LED

Painting lamps 360°

20W **ACCU** **max. 2300lm**



- + Light source: highly efficiency LED GO!
- + Total luminous flux: 2400lm
- + Power: 20W
- + Ingress protection class: IP54
- + Impact protection class: IK10
- + Impact resistance body
- + Anti-glare diffuser made of frozen polycarbonate
- + Foldable hook
- + Rubber cable H07RN-F 3x1,5mm² (5m)
- + Weight: 1,7kg
- + Cable reel in the housing of the luminaire

Version with battery:

- + Emergency working time – 90 min. of working without power supply
- + Total luminous flux: 2400lm
- + Immediate and automatic switching to „emergency” mode after power failure
- + Li-Ion 2,2Ah 14,8V battery
- + Quick battery charging (4h)



FUTURE BALL LED is the only fitting with the possibility of lighting in every direction. It ensures even and solid lighting in the entire room. The fitting can also function as an extension (optionally it can be equipped with a socket in the housing). The anti-glare lens, despite the matt surface, transmits up to 93% of light emitted by the diodes. Each fitting is provided with a hook for suspension and a cable reel. Optionally, the fitting can also be equipped with a magnet in the base, a switch or emergency lighting function in the event of a power failure. The latter function also allows you to switch the fitting between the manual function and the battery function. Note! The battery version is equipped with a specialized electronic system that always maintains the maximum battery level, which means that the fitting is always ready for operation in the battery version.



Scan a code and watch. Learn more!



www.lenalighting.pl



20W VERSION

| | |
|--|--------|
| FUTURE BAL LED 20W UNI-SCHUKO PLUG / 2xSCHUKO / 220-240V / IP54 | 619007 |
| FUTURE BAL LED 20W UNI-SCHUKO PLUG / 2xPL-FR / 220-240V / IP54 | 619229 |
| FUTURE BAL LED 20W DK PLUG / 2xDK / 220-240V / IP44 | 619014 |

Versions available on request:

- Without sockets
- Low voltage 24V and 42V
- ACCU version



FUTURE STAND

Future lamp stand

CLICK HEAD



- + Extended Length: 200 cm
- + folded Length: 108 cm
- + Leg spacing: 92 cm
- + Pipe diameter (leg): 3,5 cm
- + Load capacity: 15 kg
- + Product weight: 2,3 kg
- + Colour: black

Version with CLICK HEAD
 + Installation of many Future lamps
 + Installation without tools

Version without CLICK HEAD
 + Fitting only one Future lamp
 + Mounting with a screw



FUTURE STAND is designed to the whole family of Future fittings. In the version with click head, it enables fixing several Future fittings in a dozen of configurations. In the maximum option, 1x Future Ball, 1x Magnum Future XL, 3x Magnum Future XS fittings can be mounted at the same time. The key feature of the head is assembly with no tools required and disassembly of the fittings, which makes work with the entire „stand + fittings“ set easier and faster. The stand version without the click head allows you to place on it (with one screw) only one Future fitting.



Scan a code and watch. Learn more!



www.lenalighting.pl/magnum

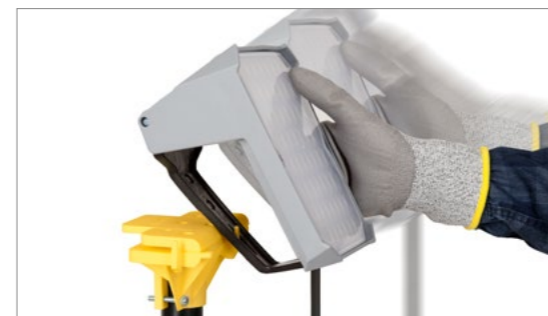


FUTURE STAND WITH CLICK HEAD

000737

FUTURE STAND WITHOUT CLICK HEAD

000720



TYTAN LED WORKPLACE

Stationary lighting

29W **IP44** **4500lm**



TYTAN LED WORKPLACE 29W / 220-240V / IP44

908101



- + Light source: high-efficiency LED GO!
- + Total luminous flux: 4500lm
- + Power: 29W
- + Ingress protection class: IP44
- + Impact resistance body
- + Anti-glare diffuser made of frozen polycarbona
- + The possibility of creating light lines (max. 300m / 25 pcs.)
- + Dimensions: 1152/85/80 (mm)
- + Rubber cable H07RN-F 3x1,5mm² (5m)
 - 10 m initial with plug
 - 1m end with socket



Surface-mounted LED fitting or one mounted directly on the stand with high parameters and increased IP44 protection. Designed for temporary mounting in the workplace. The design of the fitting ensures best heat distribution outside and even distribution of internal temperature, maintaining optimal conditions for LED sources that guarantee long-lasting and reliable operation. The offer includes fittings with cables of various lengths and plugs of various types. Protective nets are available.



Scan a code and watch. Learn more!



www.lenalighting.pl/tytan

They are not much more expensive, but more durable and cost-effective.

Purchasing good-quality products can minimize downtime caused by machine or tool failures.



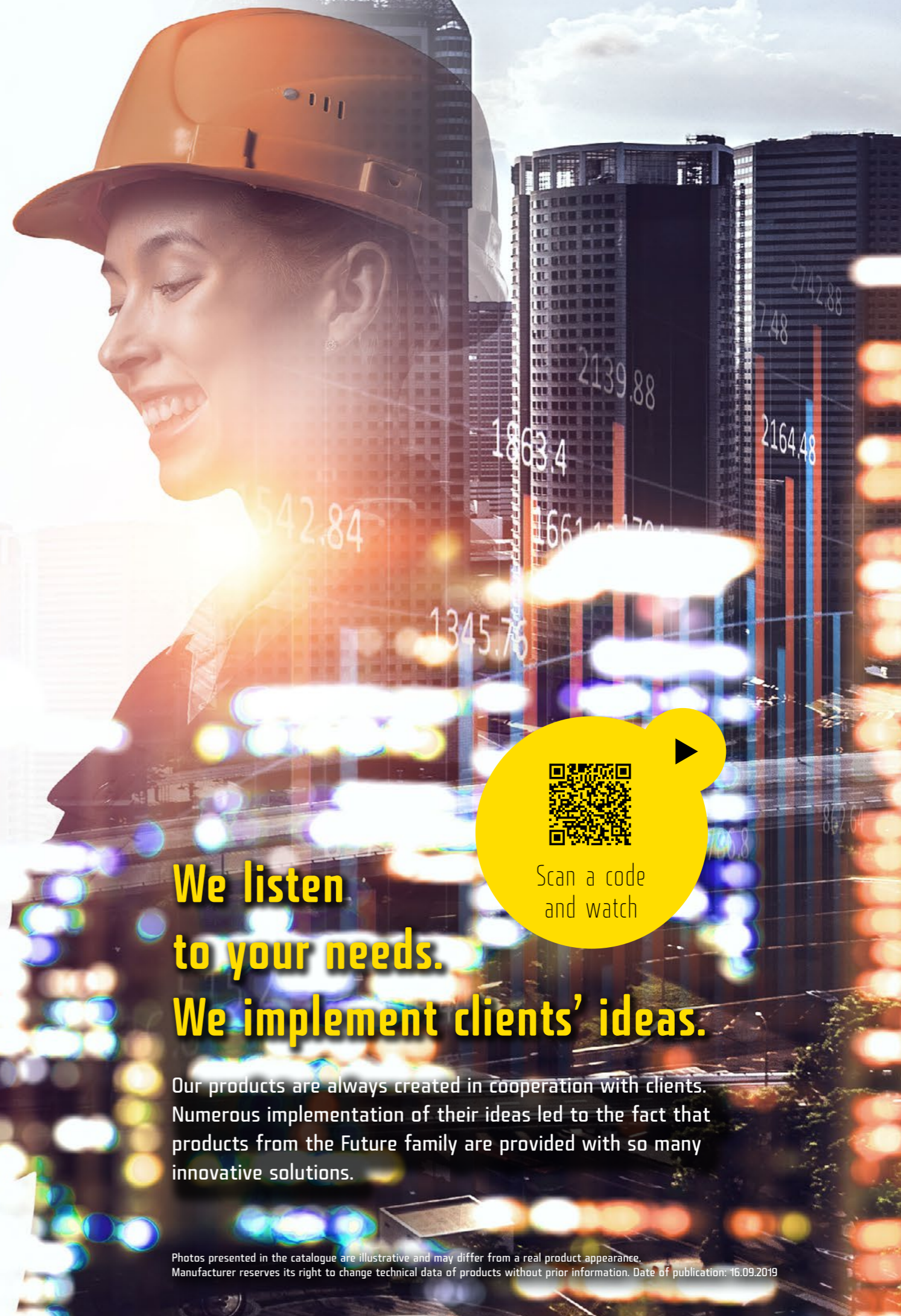
Investment in products from the FUTURE family simply pays off!

FUTURE products are a combination of maximum efficiency, versatility, extraordinary durability and cost-effectiveness. Original LED GO! technology, designed by Lena Lighting and used in FUTURE lamps, ensures maximum light output with minimal energy consumption.

LED GO! diodes feature ~50,000 hours of lifetime (~6 years of continuous lighting) and a 5-year guarantee of availability of components.*

* detailed warranty terms available on www.lenalighting.pl

LED GO!



We listen to your needs.

We implement clients' ideas.

Our products are always created in cooperation with clients. Numerous implementation of their ideas led to the fact that products from the Future family are provided with so many innovative solutions.

Photos presented in the catalogue are illustrative and may differ from a real product appearance. Manufacturer reserves its right to change technical data of products without prior information. Date of publication: 16.09.2019



FUTURE LED FAMILY

Certified and tested
by construction
engineers.



POLISH PRODUCT

Lena Lighting S.A.
ul. Kórnicka 52, 63-000 Środa Wlkp.
tel. +48 (61) 28 60 300
office@lenalighting.pl

www.lenalighting.pl

